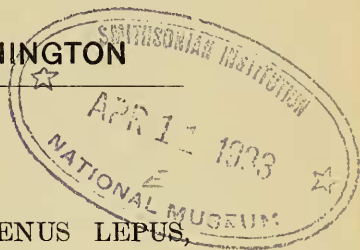


PROCEEDINGS
OF THE
BIOLOGICAL SOCIETY OF WASHINGTON



AN UNDESCRIBED JACK-RABBIT, GENUS *LEPUS*,
FROM CARMEN ISLAND, GULF OF
CALIFORNIA, MEXICO.¹

BY WILLIAM HENRY BURT.

In the spring of 1930, when Mr. Harry H. Sheldon visited Carmen Island, in the Gulf of California, Mexico, he collected an adult female black-tailed jack-rabbit which differed appreciably both in skull and skin characters from the jack-rabbits occurring opposite on the mainland of Lower California. In January, 1932, the writer obtained three additional specimens from Carmen Island, the four specimens now being in the collections at the California Institute of Technology. In my opinion the island specimens differ sufficiently from the known races of jack-rabbits to warrant distinction by name. It is a pleasure to name this island race for Mr. Harry H. Sheldon, who collected the first specimen from the island.

Lepus californicus sheldoni, subsp. nov.

CARMEN ISLAND JACK-RABBIT.

Type.—Female adult, skull and skin; no. 18061, collection of Donald R. Dickey; Carmen Island [latitude 26° north, longitude 111° 12' west), Gulf of California], Lower California, Mexico; March 22, 1930; collected by H. H. Sheldon; original no. 6338.

Measurements of type.—Total length, 560 mm.; tail vertebrae, 95; hind foot, 118; ear (from notch, dry), 126. Skull: basilar length of Hensel, 70.9; length of nasals, 37.5; breadth of rostrum at posterior termination of premaxillae (taken from outer borders of frontal processes lateral to premaxillary tongues), 20.8; depth of rostrum in front of premolars, 20.1; interorbital width (including supraorbital processes), 26.7; least interorbital width, 12.8; parietal width of skull, 30.6; diameter of auditory bullae, 14.6.

¹Contribution from the California Institute of Technology.

Distribution.—Known only from Carmen Island, Gulf of California, Mexico.

Characters.—A moderately dark-colored race of the *californicus* group of jack-rabbits, as defined by Nelson (North Amer. Fauna No. 29, pp. 126-128, 1909), with large audital bullae and with frontal area depressed below plane of supraorbitals. Differs from *Lepus californicus xanti* Thomas, as represented by specimens from Cape San Lucas, Los Burros, and Delores Bay, Lower California, in more nearly iron gray coloration with only a trace of the pinkish buffy of the upperparts which is so noticeable in *xanti*, in larger, more inflated audital bullae, and in more depressed frontal area in region of supraorbitals. Skull similar to that of *Lepus californicus martirensis* Stowell, but relatively and actually broader with larger bullae. Differs from *Lepus californicus magdalenae* Nelson chiefly in darker, less buffy, coloration and larger size.

Remarks.—Jack-rabbits were seen only at the north end of Carmen Island, particularly along the foothills east of the salt works where there was a rather dense growth of mesquite.